

BRANDWEAR

VOL.14



Sheer Bamboo

The popularity of Sheer fabrics continues to grow in Fashion, Function and in Versatility. The translucent quality of Sheer Bamboo (meaning it allows light to pass through) makes it airy and soft. Looks and keeps you cool.... however... **The Best feature** is that you can customize it to have any pattern, print or logo embedded directly into the fabric and make it your own.

Custom Dye lots and designs: 300 meters

95% Rayon Bamboo, 5% Spandex. Single Jersey Preshrunk.

Logoing Techniques Recommended:

Embroidery, Silk Screening, Heat Press, **3M** Hi-Visibility Reflective



Destinee

Style #172
Reversible Zip Tank
S-XXL

Silver metallic zipper that runs as high or low as you choose. Reversible cut. Wear the zipper to the front or the back. So versatile... you control the look.

Black

White

Licorice



Sheer Bamboo

Jada

Style# 175
Scoop Neck Top
S-XXL

Gathered seams that run through the side seams with a raglan sleeve that rests just above the elbow. The combination makes it a complimentary top that will cover some of areas that we're more sensitive about.



Lacy

Style# 176
Blousy V-Neck
S-XXL

Lovely flowing style. Soft and draping allowing you to feel free and confident. The plunging v-neck can be positioned at whatever level the moment calls for. Fun new style.

Black

White

Licorice



Paris

Style# 174
Cover Up
S-XXL

So soft and light. A perfect cover up for warmer nights and climates. Seams that runs horizontally across the back and the top of the front, that gather to give a non-clinging drape. Long sleeves with a small tasteful cuff. The flattering curve of the front is very slimming.

Black

White

Pamela

Style# 111
Low Cut Vee Tee
XS- XL

Voluptuous Vee neck. The photo speaks for its self. Long in the body, ultra sheik fabric. Ask us about our all over custom fabric prints with your own logo's or tag lines with pantone matching.

Companions with:
Style#116 Diego



Black



White



Licorice



Diego

Style# 116
Men's Tee
S-XXL

Men's v-neck tee "fashion statement".
A must have.
Wear alone or as a layering piece.



Denzel

Style# 115
Men's Tee
S-XXL

Men's crew neck tee at an elevated level. Feel Smooth.... Look Smooth be Smooth and Enjoy!

Black

White

Licorice

Bamboo Jersey

Rayon Bamboo is softer than the softest cotton and has a natural sheen to the surface. Protective Bamboo fiber contains a natural agent that prevents the growth of bacteria, thus keeping you odour-free. Bamboo apparel is comfortable, more breathable than cotton, fast drying, moisture-wicking and thermal regulating. It will keep you cooler in the summer and you can layer it to be warmer in the winter. It is the perfect fabric choice for those sensitive to allergens. Bamboo is inherently organic. It is grown without pesticides or chemicals, requires little water and is 100 % bio-degradable. It absorbs a very high percentage of carbon dioxide. It has been found to show no reduction in its antibacterial nature, even after 50 washes. Preshrunk so there are no surprises when washed.

70% Rayon Bamboo, 25% Cotton, 5% Spandex

Logoing Techniques Recommended:

Embroidery, Silk Screening, Heat Press, **3M** Hi-Visibility Reflective





Bamboo Jersey

Cleo

Style# 265
Cover Up
S - XXL

Wear it open or tie it at the waist.
You can even tie it as an empire
waist or wrap it to the back.



Black



White



Iris



Taylor

Style# 262
Elongated Dress
S - XXL

Floating and Free. Tapered and over lapping front panels that complement the cut and allow for easy movement.



Bamboo Jersey

Laurel Dress

Style# 252

Dress

S-XXL

Our LBD "little BRIGHT dress".
Simple and Elegant. Fabulous and
Flowing. Cross-over dress. Relax
and be carefree.

Black

Magenta

Paprika

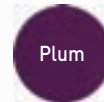
Peacock



Shawl Cover

Style# 264
Shawl Collar Cover Up
S - XXL

Drop tail 3/4 sleeve shawl collar cover finishes most any outfit. Very flattering.



Charlize

Style# 269
Gathered Turtleneck
S-XXL

Keep the chill out. Beautiful design for turtleneck lovers. Extra long gathered side seams, arms and neck.

Black

Brilliant
Blue





Toni

Style# 259
Two Toned Cover Up
S/M, L/XL

Long in the back, graceful and draping.



Dolman

Style# 267
3/4 Sleeve
XS - XXL

Wide at the armhole, narrow at the wrist, minimizing the appearance of the waist line. The dolman sleeve has always been considered one of the most fashionable choices a woman could make.



Twist Top

Style# 218
Twisted Top
S - XXL

3/4 sleeve with tasteful twisted
"V". So supremely sensuous.



Black



Brilliant
Blue



Red



Plum





Pandosa

Style# 266
Long Sleeve
XS - XXL

Scoop neck long sleeve.
A true staple.

Companions with:
Style# 225 Hamilton



Chino

Style# 248
Cute Cap Sleeve
XS - XXL

Plunging v-neck with princess side seams, extra long in the body and cap sleeves.



Bamboo Jersey

Okina

Style# 247
3/4 Sleeve Vee
XS - XXL

Super Sexy v-neck. Long in the body with 3/4 sleeves. Look sultry, feel amazing. Perfect for anyone on the move. Neckline too low? Layer it up.



Sylvee

Style# 268
Versatile Dolman Short Sleeve
S - XXL

So Vogue. The Sylvee
compliments all shapes and
sizes. Forgiving, Fashionable
and Fantastic.





MaLing

Style# 211
Short Sleeve
XS - XXL

Designed to be your favorite t-shirt. Great fit, great comfort, great look. Custom cuts available in youth sizing.

Companions with:
Style# 215 Simon



Flo

Style# 284
Flared Tank
S - XXL

Tasteful and elegant. A fit to flatter.
Shapely cut with straps that taper,
yet still concealing bra straps.



Black



White



Brilliant
Blue



Plum





Lindsay

Style# 282
Long Tank Top
S - XXL

Our simple tank is simply indispensable. Low scoop in both front and back. "Must Have" status for layered looks or alone in warmer weather.





Tami

Style# 283
Racer Back Tank Top
S - XXL

Long and fitted. Perfect for those epic workouts. Great for Yoga... Dance... the list goes on.



Black



Charcoal
Heather



Paprika





Long Hood

Style# 228
Hood
S - XXL

Loose fitting, large hood with scooped drop tail back. Flat seamed for chafe resistance and comfort.



Breezy

Style# 271
Spaghetti Strap Tank
S-XXL

Loose fitting, light and airy. With the body blousing and band at hips you'll have fun, fun, fun wearing this piece.



Nandina

Style# 295
3/4 Raglan Sleeve
XS - XXL

Wider neck, longer body, raglan three quarter sleeve is a favorite. Layer it up or not- you decide.



Black



Red



Charcoal
Heather



Plum



Charcoal
Mix/Black
Stripes



Dora

Style# 287
Long Sleeve Dolman
S - XXL

Two toned dolman long sleeve.
A timeless flattering piece.



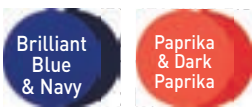


Cassie

Style# 237
Cover Stitch Golf Shirt
S - XXL

Contrast stitching, side vents,
long body and a most flattering
fit, makes this golf shirt
"DISTINCTIVE".

Companions with:
Style# 207 Triple Stitch Golf
Style# 208 Thade Golf Shirt



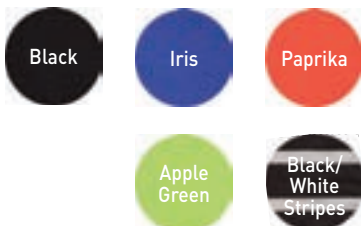


Bambi

Style# 242
Golf Shirt
S - XXL

Super soft flattering golf shirt with Princess seams, wide hem with side vents and new longer body. Tuck in, or not. Fabulous either way.

Companions with:
Style# 207 Men's Triple Stitch
Style# 208 Thade Men's Golf



Felicia

Style# 240
¾ Sleeve Golf
S-XXL

Princess seams and side vents with a “not-too-plunging” neckline and three quarter sleeves. Super soft and non clinging.

Black

Brilliant
Blue

Plum



*“Black, like
white, is the
best color”*

- Karl Lagerfeld



Simon

Style# 215
Short Sleeve
S - XXL

The finest, softest t-shirt you will own. You can wear it with a blazer or as a first layer piece when playing sports.

Companions with:
Style# 211 MaLing



Hamilton

Style# 225
Long Sleeve
S - XXL

The perfect All Season shirt. Whatever the occasion, be it sports, travel, or even fine dining. The Hamilton is the ultimate first layer piece.

Companions with:
Style#266 Pandosa



Thade

Style# 208
Golf Shirt
S - XXL

Top shoulder seams that can be contrasted when running custom runs. Keep cool under pressure, look even cooler.

Companions with:
Style# 242 Bambi
Style# 237 Cassie





Triple Stitch Golf

Style# 207
Golf Shirt
S - XXL

Triple stitching throughout the design including the collar and bottom placket, adding style and the opportunity to pick up the contrast stitch in the logo treatment. Stand apart from the others.

Companions with:
Style# 242 Bambi
Style# 237 Cassie





Travis

Style# 244
Men's Pocketed 1/4 zip
S-XXL

Amazing first layer piece.
Functional Fundamental Fashion.

Black

Charcoal
Heather

Basil

Style# 209
Long Sleeve
S - XXL

Long sleeve golf polo...
a wardrobe essential. Wear it
with a blazer or sports coat or
just on its own. Anyway you
choose, you'll be so comfortable.

Black

Navy

Charcoal
Heather

Charcoal
Mix/Black
Stripes

Silver/
Black
Stripes

Bamboo French Terry

Our pre-shrunk stretch French Terry fabric, made of 70% Bamboo, 25% Cotton, 5% Spandex, is unparalleled for its blissfully soft feel and flattering fit. With added spandex for a little extra “give” when moving around, it is antibacterial, odor resistant, has natural wicking properties and is static free. The natural properties of bamboo keep you cool in Summer and warm in Winter. These properties of bamboo remain even after 50 washes. Our own special blend of Bamboo French terry so it won't bag out. Preshrunk so there are no surprises when washed.

Logoing Techniques Recommended:

Embroidery, Silk Screening, Heat Press, **3M** Hi-Visibility Reflective



Grams





Bamboo French Terry

Joselyn

Style# 334
Women's Mock Neck Jacket
S-XXL

Smart and Classy jacket. Cuffs with slits the curve to the seam. Complete flatlock stitching with two way zipper. Easy piece to transition from Corporate to Class to Café. Preshrunk for hassle-free laundry.

Companions with:
Style# 306 Blayze



Black



White



Peacock



Raspberry





Coco

Style# 359
Women's Long Open Cardigan
S-XXL

Exceptionally comfortable without compromising flare and fashion. Big over-sized pockets with the back having a subtle scoop. Lovely style that you can wear as a cardigan / coat and wrap yourself in.



Black

Peacock

Plum

Suzette

Style# 315
Hi-Collar Jacket
S - XXL

Sporty jacket with long collar that can be worn zipped up tight and rolled over or open, giving a wide collar appearance.



Juliette

Style# 365
Long Hood
XS - XXL

Extra long in the body and cuffs, extra comfy, two way metallic zipper with kangaroo set-in pockets.

Companions with:
Style# 302 Dastan





Dominique

Style# 321
Women's Jacket
S-XXL

Versatile jacket with intricate details to the design. Gathered seams in the upper body. High Collar with chin guard. Tasteful invisible pocket zippers, Long in the body and sleeves. Great jacket that crosses over from active to casual.

Companions with:
Style# 306 Blayze

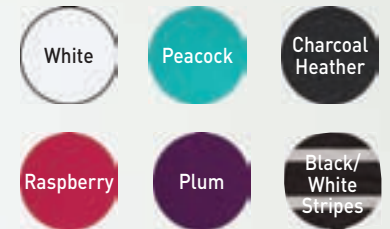


Claire

Style# 377
1/4 Zip
S - XXL

One of our most popular styles in bamboo French terry. We think the picture speaks for itself. Long 1/4 zip, big buttons, contrast binding all add up to CUTE!

Companions with:
Style# 333 André



Evee

Style# 328
Long Pullover
S-XXL

Long, slimming, fitted,
forviving and fabulous. Layer
over tights to be casual or
dress up and be comfortable.
Très Chic... You decide.

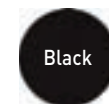




Lilith

Style# 395
Legging
S - XXL

Slimming fit. No bulk... allowing you to move freely. Wear with the Juliette Hoodie, Long Eevee or Coco- to name a few.





Charlotte

Style# 345
Jacket
S - XXL

Full zip fitted mock neck jacket with metallic zippers. Princess seams and inside pockets. Flattering to a multitude of shapes. A true show piece.

Companions with:
Style# 306 Blayze





Lana

Style# 397
Legging
S - XXL

Zippered fly with faux pocket details are sure to turn heads. Slim cut legging. Sassy

Black

Georgette

Style# 394

Pant

S - XXL

An "All Day" pant... from morning 'til night. 2" waistband that sits just below your natural waistline. Great for travel, yoga, gym, running, just lounging or to bed....shhhhhh! Whatever you do, you'll feel and look great! Custom cuts available in youth sizing.

Black

Charcoal
Heather

Dahlia Short

Style #392
Sizes S-XXL

Yoga, gym, running, workout,
whatever wear! Custom cuts
available in youth sizing.

Black

Bamboo French Terry

Amelie

Style# 327
Cardigan
S - XXL

A simple V-neck cardigan that isn't super bulky, looks good on everyone. Great for work time or play time. Casual yet classic.

Companions with:
Style# 307 Christian



Christian

Style# 307
Cardigan
S - XXL

A GQ Wardrobe must have. Streetwear HOT!
Works for everyone, whatever your style

Companions with:
Style# 327 Amelie

Black

Charcoal
Heather



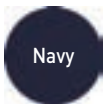
Bamboo French Terry

André

Style# 333
1/4 Zip CLASSIC
S - XXL

Tasteful 1/4 zip with hidden zipper and rubber stop slider. Perfect for most occasions.

Companions with:
Style# 377 Claire



Dastan

Style# 302
Full Zip Hood
S - XXL

Straight up? Getting Comfortable never looked so good. This isn't just another "hoody" You really need to see it to appreciate all the details. V-pointed shoulder seams with sculpted hem line and fitted contour hood. Anti-lock slide zippers.

Companions with:
Style# 365 Juliette

Black

Brilliant
Blue

Charcoal
Heather

Bamboo French Terry

Blayze

Style# 306
Jacket
S - XXL

High collar, hidden front and side zip pockets. Stylish detailed waist band. Flatlock stitch for chafe resistance. Can be custom two-toned.

Companions with:
Style# 345 Charlotte
Style# 321 Dominique
Style# 334 Joselyn

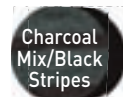
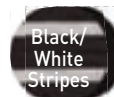




Manny

Style# 332
Men's ¼ zip
S - XXL

A timeless piece...
Now add some flare.
Stripes. Why not?





Julien

Style# 310
Short
S - XXL

Long Short with side seam pockets. Elastic waist with drawcord.

Black

Charcoal
Heather

Pierre

Style# 320
Pant
S - XXL

Casual walking or work out in comfort pant. Side seam pockets with no extra bulk. Elastic waist with drawcord.

Black

Charcoal
Heather

Bamboo Stretch Fleece

Our new Bamboo Stretch Fleece is a great addition to our renowned Bamboo Jersey and Bamboo French Terry fabrics. Bamboo Stretch Fleece has the same fabric content which gives you the same incredible properties and a whole new reason to want to wear Bamboo. Comfy, cushy, cuddly, velvety warm. Fluffy and cottony soft. Everyday Fleece Wear now in Bamboo.

70% Rayon Bamboo, 25% Cotton, 5% Spandex.

Logoing Techniques Recommended:

Embroidery, Silk Screening, Heat Press, **3M** Hi-Visibility Reflective.







Lina

Style# 415
Women's Open Bottom Pant
S - XXL

Fabulous Lounge/ Lifestyle pant.
Loose elastic waist with drawcord
with very slight flared bottom.

Black

Charcoal
Mix

Paige

Style# 418
Women's Full Zip Hoody
S - XXL

Long Flowing hood with details such a two way zipper, double lined hood and thumbholes discretely in the seams of the cuffs.

Black

Black &
Charcoal
Mix

Charcoal
Mix



Polly

Style# 419
Women's Pullover Hoody
S - XXL

A basic hoody with a whole new slant. Double lined hood. Small tasteful kanga pouch and thumbholes discretely in the seams of the cuffs.

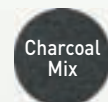
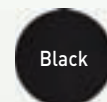




Carla

Style# 416
Women's Workout Pant
S - XXL

The "Old School" sweat pant for women. So Soft, you'll want to jump into these in the morning and never take them off. Side pockets and a waist band with flat cotton drawcord that ties to the inside.



Bamboo Stretch Fleece

Maxwell

Style# 442
Men's ¼ Zip Hoody
S - XXL

Tried, true and timeless with a new look. With the combination of a men's hood and a ¼ zip, it allows for more warm up and cool down options.





Jackson

Style# 420
Men's Pant
S - XXL

We took a basic sweat pant and made it a little more interesting by adding not only two deep side pockets but a large back pocket as well. Work out, or hang out or everyday. Sure to become your first pick.



Omega Fit

“Not just a good fit... Omega-Fit”

“You’ve asked for it.... YOU’VE GOT IT!”

Omega by definition means “the Ultimate”. Omega Fit is one of the highest quality fabric used in the marketplace for active wear today. The nylon used in Omega-Fit is made to feel silky and smooth...a second skin so you can breath and bend. With a high percentage of Spandex that is engineered into the fabric, your garments will keep their shape forever. You can stretch without stretching your clothes. Omega-Fit features breathability, making it faster drying than cotton. It’s flexible, resilient and supple so your clothes won’t fade, wrinkle, snag or pill. The ideal choice for Active Sportswear including dance, yoga, running, cycling, gymnastics or everyday casual wear.

87% Nylon, 13% Spandex Jersey

Logoing Techniques Recommended:

Embroidery, Silk Screening, Sublimation,
Heat Press, **3M** Hi-Visibility Reflective





Bree

Style# 13
 Women's Racer Back
 XS- XXL

Long Tank top with built in bra.
 Flattering lines with flatlock stitching.
 Great first layer piece to pair with any
 of the Omega Fit bottoms and jackets.



Zara

Style# 26
Stylized Jacket
S-XXL

Contrasting panels on both front and back make for the perfect ensemble with coordinating pants and tops along with accessorizing headbands. Subtle seams with invisible pockets. Tasteful yet distinguished. Hidden thumbholes in the cuff seam. Long body with a 2-way zipper makes for easy adjustments.

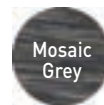
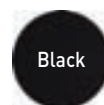




Vivian

Style# 66
Women's Pant
XS-XXL

Slightly flared leg with flatlock seams.
Very flattering fit that will complement
your shape and energize.



Omega Fit

*We're
Pushing
Leggings*



Lonnie

Style# 65
Women's Legging
XS- XXL

You'll love the streamline fit of this legging. Complete with flatlock stitching, it feels like a second skin.



Kari

Style# 14
Bra Top
XS-XXL

Perfect for mild to moderate impact sports. Mix and match your tops, pants, shorts and accessories. Super comfortable and stretchy. The bra top that moves with you. Flatlock stitching to prevent abrasion.



Carmen

Style# 17
Capri
XS-XXL

Flattering contrasting hip band, side slits at knees and flatlock stitching throughout. Pair these with our Kari Bra or Jessica Tank Top and Layla Jacket for a complete outfit. Comfort without sacrificing style.





Martina

Style# 16
Skort
XS-XXL

With built in shorts you can wear this skort for all kinds of sports including golf and tennis. Great for patio servers where the wind can catch you off guard. Flatlock stitching for added comfort.

Black &
Black

Black &
White



Zoe

Style# 60
Women's Pocket Pant
XS-XXL

Complete with zippered pocket for keys, credit cards and cash. All inseams are 34" and are flatlock stitched. The perfect cut that holds you in... in all the right places. Super strong design, just like your workouts.



Black



Graphite





Stephi

Style# 67
Women's 7" Pocket Short
XS-XXL

Zippered pocket to stow your valuables. All inseams are 7" with flatlock stitching. Not too short... not too long. Great cut so you'll look and feel your best.

Black

Mosaic
Blue

Layla

Style# 22
Stylized Jacket
XS- XXL

The contoured lines the run throughout this piece have been strategically placed to add shape and mobility, all with flatlock stitching. Thumbholes at the wrist seam are a tasteful touch. Functional when you're needing extra warmth over your hands and discrete when being worn as is. Side pocket as part of the curved princess seam. Long in the body with a 2-way zipper making for more adjustments. Layla will complete your outfit in the most favorable way.





Trey

Style# 25
Men's Jacket
S-XXL

Who says Men don't love comfort too? Time to retire your cotton and polyester jackets. Slip this piece on and you'll understand why women love Supplex. Great lines that are flatlock stitched for no abrasion when working out. Zippered side pockets for keys and cash.

Black

Graphite

Jordan

Style# 28
Men's Pant
S-XXL

The ultimate pant for guys. Amazing fit, with very cool zippered pockets and inner drawcord. Flatlock seams that prevent chafing. You won't want to take these ones off.

Black

Graphite

RPET Interlock

100% Recycled Polyester (RPET) Interlock Jersey

RPET is yarn that is made from RECYCLED materials. It's one of the most EARTH-FRIENDLY fabric INGREDIENTS in the world. Our 100% RPET INTERLOCK is moisture wicking, anti-bacterial which makes it odor resistant, Fast drying and breathable, interlock weave gives it a soft hand and smooth texture. The result is amazing performance and unbelievable comfort.

Logoing Techniques Recommended:

Embroidery, Silk Screening, Heat Press, **3M** Hi-Visibility Reflective, Water Based Digital Printing, Water Based Heat Press, Sublimation



Rachel

Style# 620
Women's Cap Sleeve
V-neck Johnny Collar
S - XXL

Flattering contrast panels and piping. Long in the body. So soft and comfortable to wear. So striking on.

Companions with:
Style# 647 Bubba

Can order custom Pantone colours with small minimums.



Bubba

Style# 647
Raglan Sleeve Golf Shirt
S-XXL

Details in this design include cover top stitching on all the seams, narrow button placket finished with triangle placed at bottom. Great travelling piece. Perfect weight for warmer days.

Companions with:
Style# 620 Rachel



Tri-Lite

Tri-Lite is a uniquely new hi-performance 100% Polyester Interlock 3-Layer. Bonded with a technical membrane between the layers to give you the lightest weather resistant jacket yet. With a 2-way stretch that really feels like a 4-way stretch, it is ideal for any activity as it keeps you warm and dry. Supple to the touch, super soft, super comfy, super quiet. An absolute break through. The answer to the storm that threatens your vacation. So soft, light and packable. Any wrinkles fall right out when unpacked. These are the only jackets you need in your golf bag.

Logoing Techniques Recommended:

Embroidery, **3M** Hi-Visibility Reflective, Sublimation & Lasering



Bella

Style# 908
Long Hooded Trench Coat
S - XXL

Your trench coat alternative. It's not just for weekends or walking the dog. Designed for evening or the workplace. With a 2-way covered zipper, flatlock stitching, contour hood and longer back, it's a multi-season keeper.



Spencer

Style #904
Men's Jacket
S - XXL

Detailed Seams With Tasteful
Cover Top Chain Stitch To
Accentuate. Darts At Elbows.
Deep Zippered Side Pockets. Auto
Lock Zippers And Chin Guard. Very
Current Style. A Perfect Travelling
Companion. Light And Packable.

BlackSilver



Eclipse

Style# 905
Hood
S - XXL

Voted best, lightest 3-layer hoodie... hands down. So soft and lightweight, you can roll it into a small ball. Be cool and confident with one of the hottest looks. Flatlock stitching, contour hood, covered zips, longer tail, velcro® closure-cinch cuffs.

Companions with:
Style# 901 Dawn



Dawn

Style# 901
Contrast Hoodie
S - XXL

Dawn hoodie delivers everything you could possibly imagine for an all around, everyday, every sport, every event jacket. Stowable, packable for "just in case" weather, she comes fully prepared for almost any mid-season condition. Left chest pocket, Girls.. for your I-Pod, I-Phone or whatever your most prized essential is. Great style and detail along with Flat lock seams, contour "hugging" hood. Longer back.

Companions with:
Style# 905 Eclipse

Silver &
Charcoal

Charcoal
& Black



Vector X3

Vector X3 is the newest addition to our remarkable soft shell program. Vector X3 offers the same great functions and features as our Tri-Lite and X-Tweed. Three layers with two way stretch weave, breathability with wind and water resistance.

Vector X3 named for its linear embossed print gives you one more striking alternative. Vector X3 is here to energize your style.

**All Over Custom Embossed Prints
Available With Low Minimums.
Pantone Matching Also Available.**

Logoing Techniques Recommended:
Embroidery, **3M** Hi-Visibility Reflective

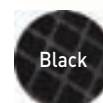


Titus

Style# 518
Jacket
S - XXL

Simple yet dynamic. Standard with a touch of electric. Electric with a touch of class. So many looks with just one jacket.

Companions With:
Style# 508 Aries



Black



Aries

Style# 508
Anorak Jacket
S - XXL

Practical?, ..sure.
Functional?, ..of course.
Fun?, ..no doubt.
Groovy?, ..not sure yet.
Stylish, smart, sharp and
sensational?, ..absolutely!

Companions With:
Style# 518 Titus
Style# 517 Eos



Eos

Style# 517
Hood
S - XXL

Is it a need or is it a want. Need the hood, want the style. Need the style, nice to have with a hood. Either way you're covered.

Companions With:
Style# 508 Aries



X-Tweed

Woolen Tweeds were originally desirable for outerwear being moisture resistant and durable. Our new X-Tweed takes it to a whole new level. X-Tweed is a wool blend bonded three-layer soft shell. It has the soft, open and flexible feel of a sweater. Two-way stretch makes it comfy. Three-layer bonding to microfleece makes it cozy. Wind and Water Resistant and Breathable. Tired of that same old black soft shell jacket? Step up to X-Tweed for a transformation that will amplify your style with already great function.

Face: 20% Wool, 30% Acrylic, 50% Polyester. Backing: 100% Polyester

Logoing Techniques Recommended:

Embroidery, Heat Press



Polaris

Style# 819
Jacket
S - XXL

Check it out. The brightest 3-layer soft shell jacket yet. Fusion soft shell shoulders to bead the rain. X-Tweed body to get noticed. Any outdoor activity? Absolutely! Dress it up for Dinner? You bet!



Rogue

Style# 817
Hood
S - XXL

Contrasting flatlock stitch to define the amazing structure and details in this hoodie. Contour hood, discrete thumb holes in cuffs and disguised inner pockets are a couple of hidden jewels. Make a strong statement.

Companions With:
Style# 818 Storm



Storm

Style# 818
Hood
S - XXL

Get carried away. It's all about you in this stunning contour hoodie. Contrast flat lock stitch, zippered pockets, longer back all add up to simply perfect. "Picture This" your own pantone threads as contrast. Minimum 72 units.

Companions With:
Style# 817 Rogue



Grey
Mix



Charcoal
Mix



Troy

Style# 832
Top Coat
S - XXL

We took a tried and true classic and updated it with a cell phone pocket, 2-way rubber stopper zipper and storm flap. Warm and Handsome without the bulk. This coat really shines through.

Companions With:
Style# 807 Tempest





Tempest

Style# 807
Classic Long Coat
S - XXL

Our longest coat ever, sheds rain and snow on your daily commute. Slimming Princess seams with curved on seam pockets making for a feminine, silhouette. Distinctly “flattering-on everyone” cut. Back vent allows for moving room. This investment will keep you looking your best for many winters to come.

Companions With:
Style# 832 Troy

Charcoal
Mix

Toque

Style# 890
Toque
S/M - L/XL

A protected warm head means more fun. Wool exterior & soft fleece lining to hold in the warmth while feeling soft next to your skin. Flatlock stitching eliminates abrasion for more comfort.



Mittens

Style# 892
Mitten
S/M - L/XL

The ultimate keep your hands warm and insulated all day.





Emma

Style# 360
Bamboo French Terry
Convertible Wrap
One Size

So many different ways to wear this Convertible Wrap. The buttons allow the versatility of a button up shawl either in the front or off the shoulders as well as a scarf around your neck or over your hair for that "Jackie" look. You'll have lots of fun with this one. Let your imagination run wild.

70% Rayon Bamboo,
25% Cotton,
5% Spandex

Black



Shayna

Style# 105

Scarf/ Shawl Sheer Bamboo

One Size: 25" W x 64" L

Look Beautiful, feel beautiful with our latest shawl that doubles as a long scarf. So many different ways to wear and tie. (visit our website at Brandwear.ca on "how to tie a scarf"). Today many women are wearing these unique fashion accessories which results in adding a very practical piece with a fashion flare to their wardrobe.



Infinity Scarf

Style# 106
 Sheer Bamboo
 One Size: 21"W x 84"L

The Rage in fashion accessories. One of Oprah's favorites. With multiple ways to wear and Tie (**visit "tiemyscarf.com"**) Wrap it twice or three times around your neck, crossing over at the bottom as you loop. You can even pull it up over your head and wear it as a "scarf/ hoodie" Wear it as a shawl, draped over your shoulders and crossing over in the front. Wear it as a vest or hang it low off your back for a very Hollywood look.

Black

White

Licorice



Bamboo Shawl

Style# 294
Shawl Bamboo Jersey
One Size - 16" x 60"

Classic simplicity that can be used as a scarf or shawl. Multiple ways to wear and tie. The final touch to bring your bamboo ensemble together. Narrow serged stitch to finish edge.

Custom Colours and sizes available.

Black

Magenta





Skinny Scarf

Style# 292
 Scarf Bamboo Jersey
 One Size - 9" x 60"

Stylish yet affordable. Finishes any outfit. A retailers dream for merchandising. Narrow Serged stitching to finish edge. Don't stock your colour? Call us. Low minimums on custom colours.



Long Scarf

Style# 293
 Scarf Bamboo Jersey
 One Size - 9" x 90"

The ultimate in versatility. Endless ways to tie. Can even make into tops! Narrow serged stitching to finish edge. Don't stock your colour? Call us. Low minimums on custom colours.



Reversible Headband

Style# 314
Bamboo French Terry
Print surface: 9" Wide x 2.75" High

Wide and versatile. Wear front or back...
in or out. Change it up to what's going on.
Look great or be practical. Can be worn to
replace an Ear Warmer, or Helmet Guard...
Just pull it out of your "back pocket".
A "Winters Day Essential"

Logoing Techniques Recommended:
Heat Press, **3M** Hi-Visibility Reflective.



Jules

Style# 204
Headband Bamboo Jersey
One Size - 1.5" High

Great for your workouts or just keeping your hair back. Soft and comfortable.

Logoing techniques recommended:
Heat Press, **3M** Hi-Visibility Reflective,
Silk Screening





Wide Headband

Style# 304
Headband Bamboo French Terry
One Size

Great for your workouts , under helmets or just keeping your hair back. Soft and comfortable. Print surface: 6" wide x 2.5" high.

Logoing techniques recommended:
Heat Press, **3M** Hi-Visibility Reflective, Silkscreening & Embroidery.





Holly

Style# 44

Omega Fit Headband

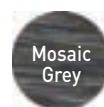
87% Nylon, 13% Spandex Jersey.

One size 1.5" high

Omega Fit Headband comes with super stretch and memory. Wear as a headband, or tie your hair back as scrunchy. Soft and easy on your hair and next to your head.

Logoing Techniques Recommended:

Heat Press, **3M** Hi-Visibility Reflective, Sublimation & Silkscreening.



Chase

Style# 90
Running Cap
Omega Fit Toque
One-size

Running hat with flatlock stitching for ultimate comfort. Keep your ears warm and heat in on those chilly days. Good for under helmets.

87% Nylon,
13% Spandex Jersey



Mia

Style# 91
Women's Running Cap
Ponytail Omega Fit Toque
One Size

Still look feminine, even with your toque on. Flatlock stitching to enhance your performance and keep you snug.

87% Nylon,
13% Spandex Jersey



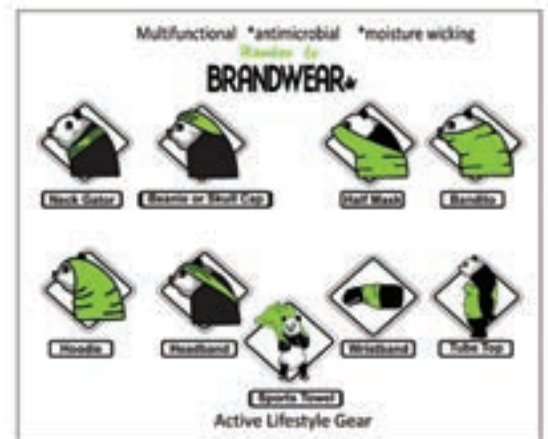


Buffee

Style# 297
Buffee Bamboo Jersey
Multi Functional

Use it as a: Neck Warmer,
Headband, Hat, Mask, Toque, Cap,
Or even as a Halter Top!

Contact Brandwear for custom
all over prints. 16" X 20"



Kylie

Style# 203
Print surface: 3" Wide x 2.5" High.
Key Cuff Bamboo Jersey
One Size

Carry keys and cards. Keeps your valuables hidden, secure and safe. Lightweight, anti-microbial and wicking making this the perfect corporate event giveaway.

Logoing Techniques Recommended:

Heat Press, **3M** Hi-Visibility Reflective, Silk Screening. Call for details.



Event Gear

Your Logo Here



Arm Band Wallet

Style# 21

Print surface: 2.75" Wide x 3.5" High.

As with the Phone Wallet, you can Carry your iPhone, iPod, Cash, Keys ID and Credit Cards Securely. Wear with easy access on your bicep.

87% Nylon, 13% Spandex Jersey

Logoing Techniques Recommended:
Heat Press, **3M** Hi-Visibility Reflective.,
Sublimation.

Black



*Text on
Phone Wallet*



Phone Wallet

Style# 20

Print Surface: 2.75" Wide x 3.5" High.

Wrist Wallet With Zipper Closure

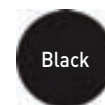
One Size

Dial & Dash. See through mesh allows you to dial, text and navigate on the go. Send and receive calls. Store Cash, Keys, ID and Credit Cards Securely. No need for pockets or purses. Conceal under long sleeves.

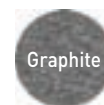
87% Nylon, 13% Spandex Jersey

Logoing Techniques Recommended:

Heat Press, **3M** Hi-Visibility Reflective, Sublimation.



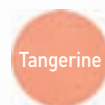
Black



Graphite



Hot Pink



Tangerine



Stadium Cover

Style# 8030
Stadium Cover
One Size

100% Polysuede & Sherpa Fleece: 40%
Recycled Polyester, 60% Polyester

Faux lamb's wool blanket carrier with
adjustable nylon strap. Perfect way to carry
your Lodge Blanket to games, picnics or any
event. Fabulous to sit on. Great presentation
Fits 50" x 60" Style# 8000 Lodge blanket.

Logoing Techniques Recommended:
Laser, Embroidery



Lodge Blanket

Style# 8000
Faux Lambs Wool Lodge Blanket
One Size - 50" x 60"

Resort Blanket

Style# 8001
Faux Lambs Wool Blanket
One Size - 60" x 70"

100% Polysuede &
Sherpa Fleece:
40% Recycled Polyester
60% Polyester

Unique sueded finish that gives the appearance of rich shearling like no other. Bonded to 100% polyester Sherpa fleece, it is amazingly warm and cozy. Easy to care for. Washer, dryer friendly! Put your name or logo on this heirloom piece. Lasering this fabric will give a "3D" with outstanding detail.

Logoing Techniques Recommended:

Laser, Embroidery



Want More?

“WOW” Your Customers!

... or just can't find it? We can help.

Custom Is Our Specialty!

Our Custom Program allows you to stand apart from the competition and satisfy your customer's individual needs. Customize your own program and keep them coming back for more.

We are 100% Made in Canada.

With access to an abundance of different fabrics and styles from all around the world, The possibilities are endless!

Full Turnkey Decoration:

Laser etching, 3D laser, embroidery, water based digital printing, silkscreening, heat press, applique, including 3M, dazzles, sparkles, luster's, glitters, shimmers & metallics (to name a few).

What Does This Mean For You?

Your Styles, Your Fit, Your Colours. Quick turnaround times. As little as 3 weeks from sign off. Low minimums. Some as little as 24 units. Run your own program for as long as you want... you decide. Private label available.

We will work with you from design, fabric selection and decoration, right through to price point and Pantone colours. Give us your wish list and we'll make it happen.

Are you looking for something out of the ordinary or can't find what you need in other programs? We can help!

If you can imagine it... We can make it happen. Let us make you look brilliant!

For additional information & a detailed description of how Our Custom Program can work for you.

Please Visit: www.brandwear.ca/custom



Easy Ways To Customize!

- ① Colour up the buttons
- ② Your logo here
- ③ **PANTONE®**
Match body to your colour
- ④ Simply change the thread colour to match your logo
- ⑤ Keep the style, change the fabric
- ⑥ Private label here

Or Go Entirely Off The Grid!



www.brandwear.ca



#20081202



#41545



US #60927



#470435

