

BRANDWEAR

VOL.13



www.brandwear.ca

Made In Canada

Omega Fit

“Not just a good fit... Omega-Fit”

“You’ve asked for it.... YOU’VE GOT IT!”

Omega by definition means “the Ultimate”. Omega Fit is one of the highest quality fabric used in the marketplace for active wear today. The nylon used in Omega-Fit is made to feel silky and smooth...a second skin so you can breath and bend. With a high percentage of Spandex that is engineered into the fabric, your garments will keep their shape forever. You can stretch without stretching your clothes. Omega-Fit features breathability, making it faster drying than cotton. It’s flexible, resilient and supple so your clothes won’t fade, wrinkle, snag or pill. The ideal choice for Active Sportswear including dance, yoga, running, cycling, gymnastics or everyday casual wear.

87% Nylon Supplex, 13% Spandex Jersey

Logoing Techniques Recommended:

Embroidery, Silk Screening,

Heat Press, **3M** Hi-Visibility Reflective







Zoe

Style# 60
Women's Pocket Pant
XS-XXL

Complete with zippered pocket for keys, credit cards and cash. All inseams are 34" and are flatlock stitched. The perfect cut that holds you in... in all the right places. Super strong design, just like your workouts.

Black

Graphite



Stephi

Style# 67
Women's 7" Pocket Short
XS-XXL

Zippered pocket to stow your valuables. All inseams are 7" with flatlock stitching. Not too short... not too long. Great cut so you'll look and feel your best.

Black

Jessica

Style# 19
Tank Top
XS-XXL

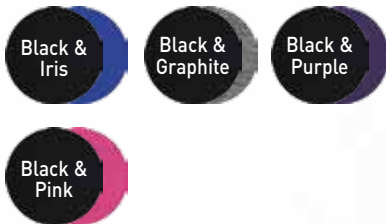
With sexy ruching seams running vertical down the front, this full pucker look will enhance and flatter. Mix and match with our Danica, our gathered pant for a very cool outfit.



Carmen

Style# 17
Capri
XS-XXL

Flattering contrasting hip band, side slits at knees and flatlock stitching throughout. Pair these with our Kari Bra or Jessica Tank Top and Layla Jacket for a complete outfit. Comfort without sacrificing style.

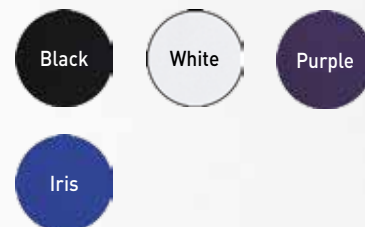




Kari

Style# 14
Bra Top
XS-XXL

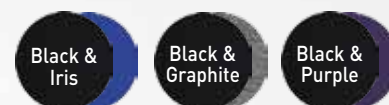
Perfect for mild to moderate impact sports. Mix and match your tops, pants, shorts and accessories. Super comfortable and stretchy. The bra top that moves with you. Flatlock stitching to prevent abrasion.



Danica

Style# 18
Gathered Pant
XS-XXL

Vertical gathered seams at waist make for a very youthful, attractive look. Slightly flared leg that won't interfere with running or high impact sports. X-Treme Stretch fabric with Flatlock stitching allows for ultimate freedom of movement.





Martina

Style# 16
Skort
XS-XXL

With built in shorts you can wear this skort for all kinds of sports including golf and tennis. Great for patio servers where the wind can catch you off guard. Flatlock stitching for added comfort.



Layla

Style# 22
Stylized Jacket
XS- XXL

The contoured lines the run throughout this piece have been strategically placed to add shape and mobility, all with flatlock stitching. Thumbholes at the wrist seam are a tasteful touch. Functional when you're needing extra warmth over your hands and discrete when being worn as is. Side pocket as part of the curved princess seam. Long in the body with a 2-way zipper making for more adjustments. Layla will complete your outfit in the most favorable way.

BlackWhiteGraphitePurple



Jordon

Style# 28
Men's Pant
S-XXL

The ultimate pant for guys. Amazing fit, with very cool zippered pockets and inner drawcord. Flatlock seams that prevent chafing. You won't want to take these ones off.

Black

Graphite

Trey

Style# 25
Men's Jacket
S-XXL

Who says Men don't love comfort too? Time to retire your cotton and polyester jackets. Slip this piece on and you'll understand why women love Supplex. Great lines that are flatlock stitched for no abrasion when working out. Zippered side pockets for keys and cash.

BlackGraphite

Sheer Bamboo

The popularity of Sheer fabrics continues to grow in Fashion, Function and in Versatility. The translucent quality of Sheer Bamboo (meaning it allows light to pass through) makes it airy and soft. Looks and keeps you cool.... however... **The Best feature** is that you can customize it to have any pattern, print or logo embedded directly into the fabric and make it your own.

Custom Dye lots and designs: 300 meters

Black: 50% Rayon Bamboo, 50% RPET.
Single Jersey, Preshrunk.



White & Licorice: 95% Rayon Bamboo, 5% Spandex.
Single Jersey Preshrunk.



Logoiing Techniques Recommended:

Embroidery, Silk Screening, Heat Press, **3M** Hi-Visibility Reflective





Destinee

Style #172
Reversible Zip Tank
S-XXL

Silver metallic zipper that runs as high or low as you choose. Reversible cut. Wear the zipper to the front or the back. So versatile... you control the look.



Paris

Style# 174
Cover Up
S-XXL

So soft and light. A perfect cover up for warmer nights and climates. Seams that runs horizontally across the back and the top of the front, that gather to give a non-clinging drape. Long sleeves with a small tasteful cuff. The flattering curve of the front is very slimming.

Black

White



Isa

Style# 173
Tie Top
S-XXL

This tie top with a very "Sixty's Look" has made a big come back with new and improved features. Small elastic at back to give it a naturally blousy look. Tie front so you can decide how much you want to bring it in. Pockets positioned strategically, yet tasteful. Fun new style. Easy, breezy.

Black

White

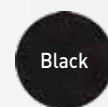




Sabrina

Style# 104
Gathered Golf Shirt
S - XXL

The Sheer Bamboo pattern in Sabrina gives an added dimension. You don't have to golf to enjoy this beautifully soft, draping top. The gathers on the sides of the small button placket makes this golf shirt very flattering. Self Collar and bottom side vents.





Jada

Style# 175
Scoop Neck Top
S-XXL

Gathered seams that run through the side seams with a raglan sleeve that rests just above the elbow. The combination makes it a complimentary top that will cover some of areas that we're more sensitive about.



Black



White

Pamela

Style# 111
Low Cut Vee Tee
XS- XL

Voluptuous Vee neck. The photo speaks for its self. Long in the body, ultra sheik fabric. Ask us about our all over custom fabric prints with your own logo's or tag lines with pantone matching.

Companions with:
Style#116 Diego

Black

White

Licorice



Diego

Style# 116
Men's Tee
S-XXL

Men's v-neck tee "fashion statement".
A must have.
Wear alone or as a layering piece.

Black

White

Licorice

Bamboo Jersey

Rayon Bamboo is softer than the softest cotton and has a natural sheen to the surface. Protective Bamboo fiber contains a natural agent that prevents the growth of bacteria, thus keeping you odour-free. Bamboo apparel is comfortable, more breathable than cotton, fast drying, moisture-wicking and thermal regulating. It will keep you cooler in the summer and you can layer it to be warmer in the winter. It is the perfect fabric choice for those sensitive to allergens. Bamboo is inherently organic. It is grown without pesticides or chemicals, requires little water and is 100 % bio-degradable. It absorbs a very high percentage of carbon dioxide. It has been found to show no reduction in its antibacterial nature, even after 50 washes. Preshrunk so there are no surprises when washed.

70% Rayon Bamboo, 25% Cotton, 5% Spandex

Logoing Techniques Recommended:

Embroidery, Silk Screening, Heat Press, **3M** Hi-Visibility Reflective





Deziree

Style# 263
Multi-Tie Dress
S-XXL

So versatile! Can be tied in 5 different ways. As a skirt, a halter dress, a cap shoulder dress, a short sleeve dress, a strapless dress and more. Comes with hangtag showing all the options.

Black

Brilliant
Blue

Apple
Green

Plum

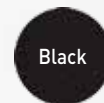




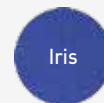
Laurel Dress

Style# 252
Dress
S-XXXL

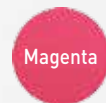
Our LBD "little BRIGHT dress".
Simple and Elegant. Fabulous and
Flowing. Cross-over dress. Relax
and be carefree.



Black



Iris



Magenta



Paprika

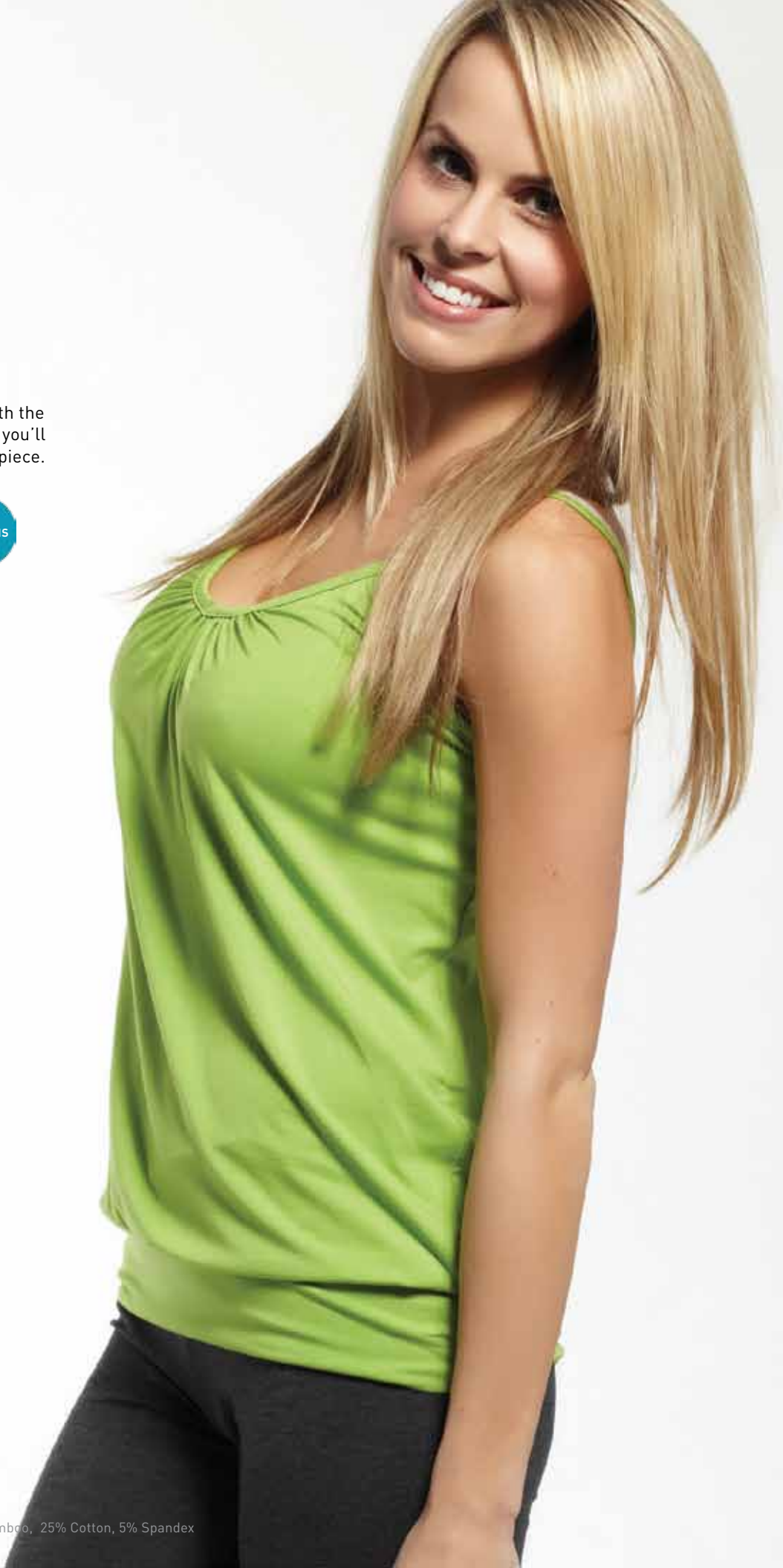
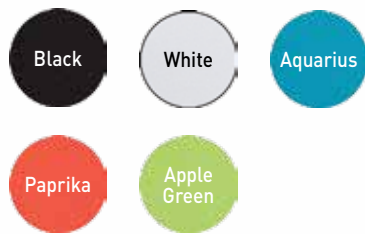


Peacock

Breezy

Style# 271
Spaghetti Strap Tank
S-XXL

Loose fitting, light and airy. With the body blousing and band at hips you'll have fun, fun, fun wearing this piece.



Beechy

Style# 270
Tank Top
XS - XXL

Ingenious cut with shoulders
that hides most straps.





Lindsay

Style# 282
Long Tank Top
S - XXL

Our simple tank is simply indispensable. Low scoop in both front and back. "Must Have" status for layered looks or alone in warmer weather.

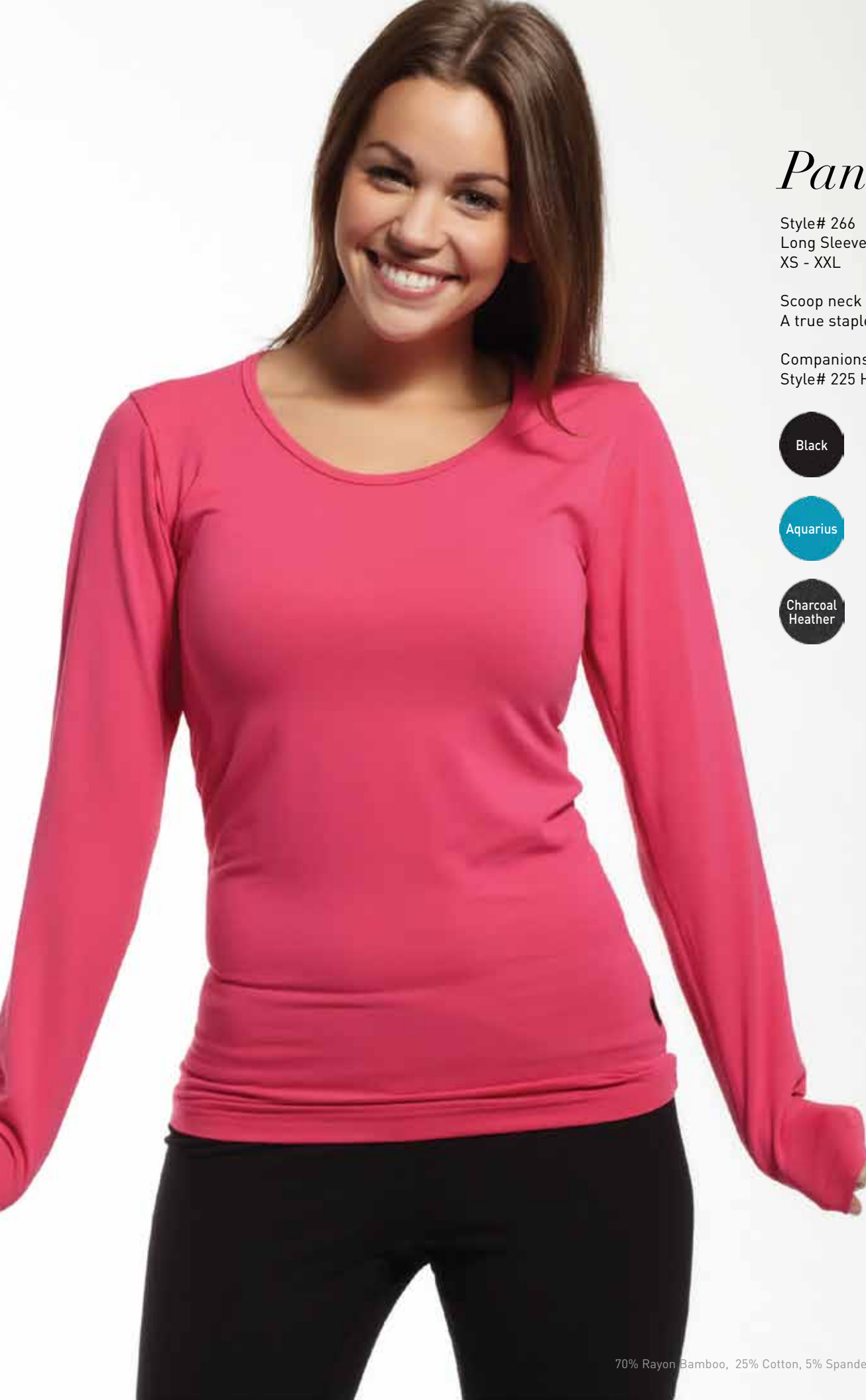


Pandosa

Style# 266
Long Sleeve
XS - XXL

Scoop neck long sleeve.
A true staple.

Companions with:
Style# 225 Hamilton



Chino

Style# 248
Cute Cap Sleeve
XS - XXL

Plunging v-neck with princess side seams, extra long in the body and cap sleeves.

Black

White

Magenta

Aquarius

Paprika

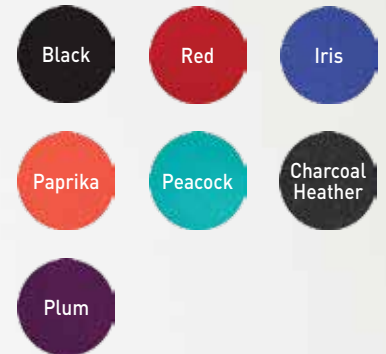
Peacock

Apple Green

Nandina

Style# 295
3/4 Raglan Sleeve
XS - XXL

Wider neck, longer body, raglan three quarter sleeve is a favorite. Layer it up or not- you decide.



Okina

Style# 247
3/4 Sleeve Vee
XS - XXL

Super Sexy v-neck. Long in the body with 3/4 sleeves. Look sultry, feel amazing. Perfect for anyone on the move. Neckline too low? Layer it up.





MaLing

Style# 211
Short Sleeve
XS - XXL

Designed to be your favorite t-shirt. Great fit, great comfort, great look. Custom cuts available in youth sizing.

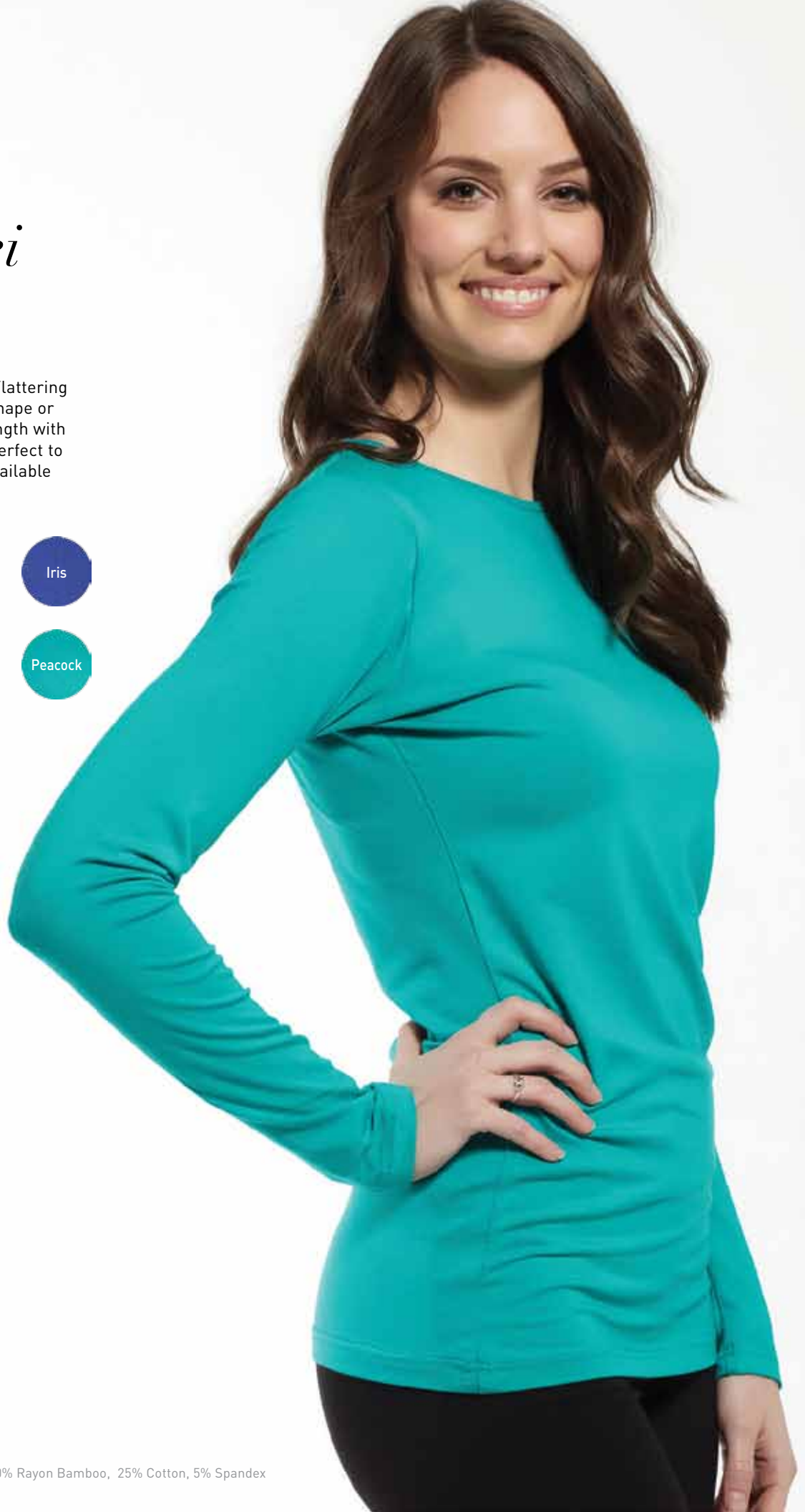
Companions with:
Style# 215 Simon



Kimmei

Style# 260
Long Sleeve
XS - XXL

Feminine neck line. Flattering piece regardless of shape or size. Longer body length with extra-long sleeves. Perfect to layer. Custom cuts available in youth sizing.



Twist

Style# 218
Twisted Top
S - XXL

3/4 sleeve with tasteful twisted
"V". So supremely sensuous.

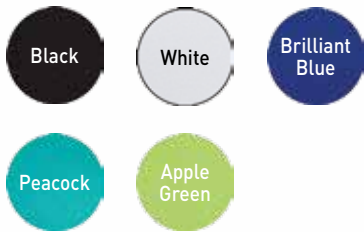




Stella

Style# 249
Gathered Princess Seam Vee
S - XXL

Enhance your shape with
Stella and her trendy gathered
princess seams. Fun!
Flattering Vee in every way.



Long Hood

Style# 228

Hood

S - XXL

Loose fitting, large hood with scooped drop tail back. Flat seamed for chafe resistance and comfort.



Sylvee

Style# 268
Versatile Dolman Short Sleeve
S - XXL

So Vogue. The Sylvee
compliments all shapes and
sizes. Forgiving, Fashionable
and Fantastic.





Dolman

Style# 267
3/4 Sleeve
XS - XXL

Wide at the armhole, narrow at the wrist, minimizing the appearance of the waist line. The dolman sleeve has always been considered one of the most fashionable choices a woman could make.



Cleo

Style# 265
Cover Up
S - XXL

Wear it open or tie it at the waist.
You can even tie it as an empire
waist or wrap it to the back.

Black

White

Iris

Latte





Shawl Cover

Style# 264
Shawl Collar Cover Up
S - XXL

Drop tail 3/4 sleeve shawl collar cover finishes most any outfit. Very flattering.





Charlize

Style# 269
Gathered Turtleneck
S-XXL

Keep the chill out. Beautiful design for turtleneck lovers. Extra long gathered side seams, arms and neck.





Felicia

Style# 240
¾ Sleeve Golf
S-XXL

Princess seams and side vents with a “not-too-plunging” neckline and three quarter sleeves. Super soft and non clinging.

Black

Brilliant
Blue

Apple
Green

Plum



Bambi

Style# 242
Golf Shirt
S - XXL

Super soft flattering golf shirt with Princess seams, wide hem with side vents and new longer body. Tuck in, or not. Fabulous either way.

Companions with:
Style# 207 Men's Triple Stitch
Style# 208 Thade Men's Golf



Makino

Style# 220
Golf Shirt
XS - XXL

Cute, collared V complete with pleated cap sleeves, and long torso body darts.

Companions with:
Style# 207 Men's Triple Stitch
Style# 208 Thade Men's Golf



Cassie

Style# 237
Cover Stitch Golf Shirt
S - XXL

Contrast stitching, side vents, long body and a most flattering fit, makes this golf shirt "DISTINCTIVE".

Companions with:
Style# 207 Triple Stitch Golf
Style# 208 Thade Golf Shirt



Triple Stitch Golf

Style# 207
Golf Shirt
S - XXL

Triple stitching throughout the design including the collar and bottom placket, adding style and the opportunity to pick up the contrast stitch in the logo treatment. Stand apart from the others.

Companions with:
Style# 242 Bambi
Style# 220 Makino
Style# 237 Cassie



Thade

Style# 208
Golf Shirt
S - XXL

Top shoulder seams that can be contrasted when running custom runs. Keep cool under pressure, look even cooler.

Companions with:
Style# 242 Bambi
Style# 220 Makino
Style# 237 Cassie



Basil

Style# 209
Long Sleeve
S - XXL

Long sleeve golf polo... a wardrobe essential. Wear it with a blazer or sports coat or just on its own. Anyway you choose, you'll be so comfortable.

Black

Navy

Charcoal
Heather

Brown



Simon

Style# 215
Short Sleeve
S - XXL

The finest, softest t-shirt you will own. You can wear it with a blazer or as a first layer piece when playing sports.

Companions with:
Style# 211 MaLing



Lorenzo

Style# 216
Short Sleeve V - Neck
S - XXL

Styl'n men's tee. Team it with your favorite jeans. Layer it under a dress shirt. Every guys classic tee.



Bamboo Jersey

Henley

Style# 219
Henley Long Sleeve
S - XXL

What better base than a
bamboo four button Henley!

Black

Charcoal
Heather





Hamilton

Style# 225
Long Sleeve
S - XXL

The perfect All Season shirt. Whatever the occasion, be it sports, travel, or even fine dining. The Hamilton is the ultimate first layer piece.

Companions with:
Style#266 Pandosa

Black

White

Navy

Charcoal
Heather

Bamboo Jersey

Travis

Style# 244
Men's Pocketed ¼ zip
S-XXL

Amazing first layer piece.
Functional Fundamental Fashion.

Black

Brilliant
Blue

Charcoal
Heather

Event Gear

Kylie

Style# 203
Key Cuff Bamboo Jersey
One Size

Carry keys and cards. Keeps your valuables hidden, secure and safe. Lightweight, anti-microbial and wicking making this the perfect corporate event giveaway.

Logoing Techniques Recommended:

Heat Press, **3M** Hi-Visibility Reflective. Call for details. Print surface: 3" Wide x 2.5" High.



Infinity Scarf

Style# 106

Sheer Bamboo

One Size: 21"W x 84"L

The Rage in fashion accessories. One of Oprah's favorites. With multiple ways to wear and Tie (visit "tiemyscarf.com")

Wrap it twice or three times around your neck, crossing over at the bottom as you loop. You can even pull it up over your head and wear it as a "scarf/ hoodie"

Wear it as a shawl, draped over your shoulders and crossing over in the front.

Wear it as a vest or hang it low off your back for a very Hollywood look.





Long Scarf

Style# 293
Scarf Bamboo Jersey
One Size - 9" x 90"

The ultimate in versatility. Endless ways to tie, Can even make into tops! Narrow serged stitching to finish edge.



Skinny Scarf

Style# 292
Scarf Bamboo Jersey
One Size - 9" x 60"

Stylish yet affordable. Finishes any outfit. A retailers dream for merchandising. Narrow Serged stitching to finish edge.



Shayna

Style# 105
Scarf/ Shawl Sheer Bamboo
One Size: 25" W x 64" L

Look Beautiful, feel beautiful with our latest shawl that doubles as a long scarf. So many different ways to wear and tie. (visit our website at Brandwear.ca on "how to tie a scarf"). Today many women are wearing these unique fashion accessories which results in adding a very practical piece with a fashion flare to their wardrobe.



Bamboo Shawl

Style# 294
Shawl Bamboo Jersey
One Size - 16" x 60"

Classic simplicity that can be used as a scarf or shawl. Multiple ways to wear and tie. The final touch to bring your bamboo ensemble together. Narrow serged stitch to finish edge.

Custom Colours and sizes available.
100 unit minimum on Custom.





Wide Headband

Style# 304
Headband Bamboo French Terry
One Size

Great for your workouts , under helmets or just keeping your hair back. Soft and comfortable.
Print surface: 6" wide x 2.5" high.

Logoing techniques recommended:
Heat Press, **3M** Hi-Visibility Reflective,
Silk Screening



Jules

Style# 204
Headband Bamboo Jersey
One Size - 1.5" High

Great for your workouts or just keeping your hair back. Soft and comfortable.

Logoing techniques recommended:
Heat Press, **3M** Hi-Visibility Reflective,
Silk Screening



Chase

Style# 90
Running Cap
Supplex Toque
One-size

Running hat with flatlock stitching for ultimate comfort. Keep your ears warm and heat in on those chilly days. Good for under helmets.

Black



Mia

Style# 91
Women's Running Cap
Ponytail Supplex Toque
One Size

Still look feminine, even with your toque on. Flatlock stitching to enhance your performance and keep you snug.

Black

Purple

Pink



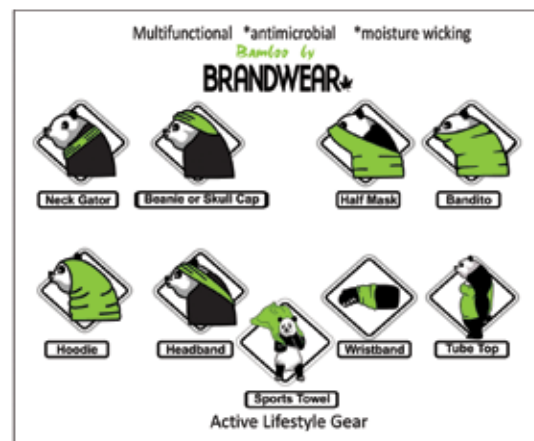


Buffee

Style# 297
Buffee Bamboo Jersey
Multi Functional

Use it as a: Neck Warmer,
Headband, Hat, Mask, Toque, Cap,
Or even as a Halter Top!

Contact Brandwear for custom
all over prints. 16" X 20"



Bamboo French Terry

Our pre-shrunk stretch French Terry fabric, made of 70% Bamboo, 25% Cotton, 5% Spandex, is unparalleled for its blissfully soft feel and flattering fit. With added spandex for a little extra “give” when moving around, it is antibacterial, odor resistant, has natural wicking properties and is static free. The natural properties of bamboo keep you cool in Summer and warm in Winter. These properties of bamboo remain even after 50 washes. Our own special blend of Bamboo French terry so it won't bag out. Preshrunk so there are no surprises when washed.

Logoing Techniques Recommended:

Embroidery, Silk Screening, Heat Press, **3M** Hi-Visibility Reflective





Coco

Style# 359
Women's Long Open Cardigan
S-XXL

Exceptionally comfortable without compromising flare and fashion. Big over-sized pockets with the back having a subtle scoop. Lovely style that you can wear as a cardigan / coat and wrap yourself in.





Juliette

Style# 365
Long Hood
XS - XXL

Extra long in the body and cuffs, extra comfy, two way metallic zipper with kangaroo set-in pockets.

Companions with:
Style# 302 Dastan

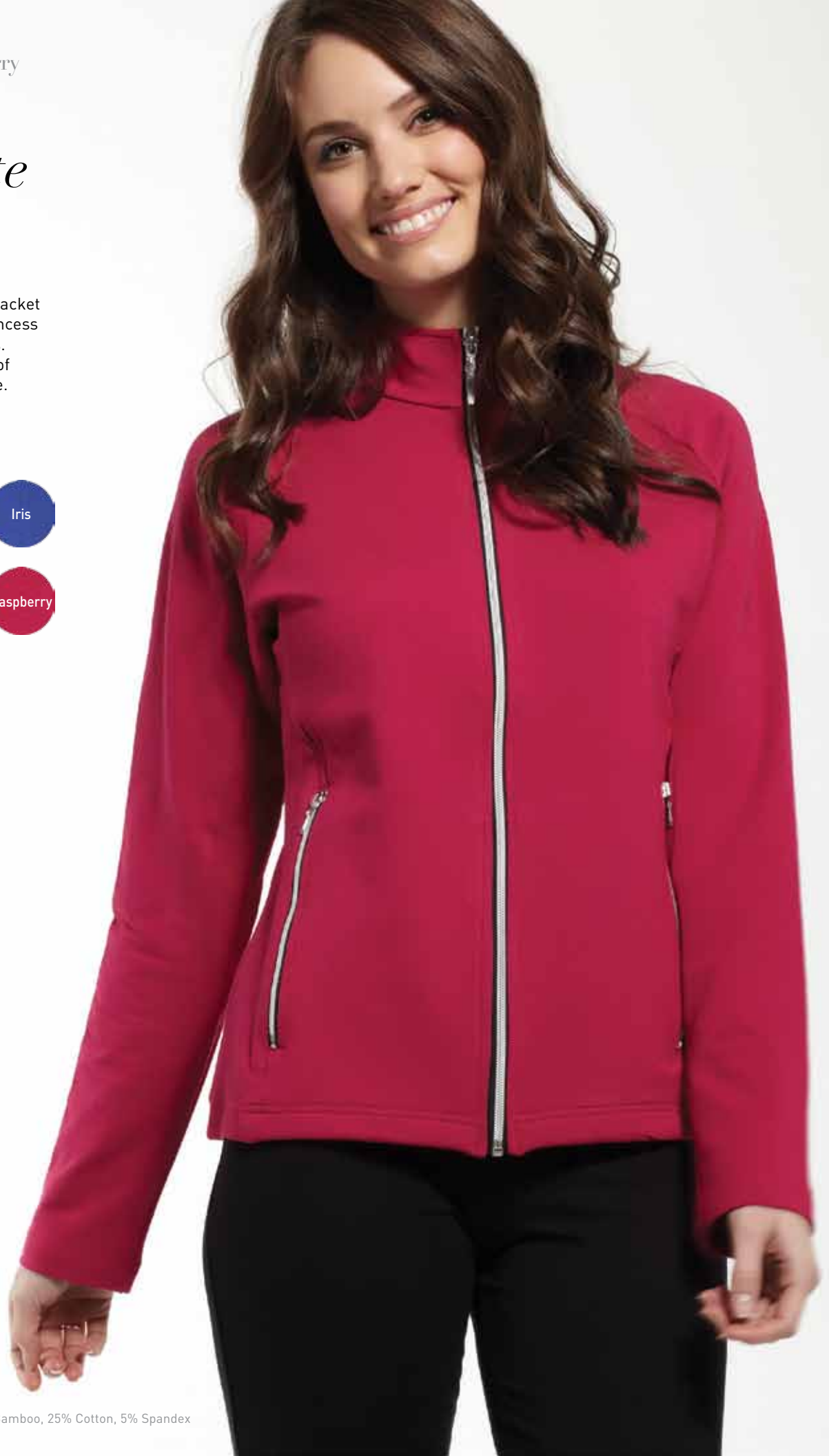


Charlotte

Style# 345
Jacket
S - XXL

Full zip fitted mock neck jacket with metallic zippers. Princess seams and inside pockets. Flattering to a multitude of shapes. A true show piece.

Companions with:
Style# 306 Blayze





Sarah Hood

Style# 376

Hood

S - XL

Long flattering hoody with so many details that include gathered shoulder seams, flared sleeves, wide-waist band at back with gathering. Two-way zipper and a large hood that can be left to drape over shoulders or pulled in to gather close to neck.

Designed by Sarah McLachlan

Black

Charcoal
Heather

Bamboo French Terry

Paulette

Style# 335
Jacket
S - XXL

Timeless classic. Long slimming
body without any bulk. Custom
cuts available in youth sizing.
Metallic zipper adds dazzle.

Black

Iris

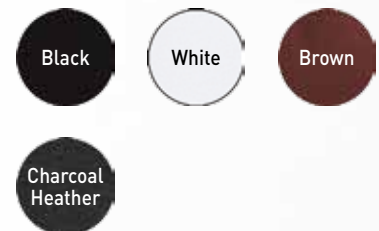




Lilith

Style# 395
Legging
S - XXL

Slimming fit. No bulk... allowing you to move freely. Wear with the Juliette hoodie, Long Eevee or the Sarah Hood - to name a few.



Bamboo French Terry

Dahlia Short

Style #392
Sizes S-XXL

Yoga, gym, running, workout,
whatever wear! Custom cuts
available in youth sizing.

Black

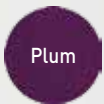
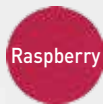


Claire

Style# 377
1/4 Zip
S - XXL

One of our most popular styles in bamboo French terry. We think the picture speaks for itself. Long 1/4 zip, big buttons, contrast binding all add up to CUTE!

Companions with:
Style# 333 André



Bamboo French Terry

Angelina

Style# 358

Hooded Shawl

One Size

Measurements:

Back: 35"L Front Panels 20"W

Throw over shoulder wrap with hood. Uniquely versatile. Cool, cute and can keep you warm.

Black





Georgette

Style# 394

Pant

S - XXL

An "All Day" pant... from morning 'til night. 2" waistband that sits just below your natural waistline. Great for travel, yoga, gym, running, just lounging or to bed....shhhhhh! Whatever you do, you'll feel and look great! Custom cuts available in youth sizing.

Black

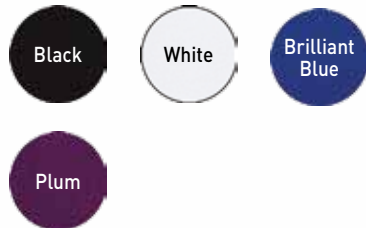
Charcoal
Heather

Dominique

Style# 321
Women's Jacket
S-XXL

Versatile jacket with intricate details to the design. Gathered seams in the upper body. High Collar with chin guard. Tasteful invisible pocket zippers, Long in the body and sleeves. Great jacket that crosses over from active to casual.

Companions with:
Style# 306 Blayze





Rhianna

Style# 396
Contrast Yoga Pant
S - XXL

Lower rise in front with cross over detail at waist. Flat lock stitching. Slightly flared leg. Work out, Run, Travel or Warmth. Whatever you're after, you'll look and feel fabulous.



Suzette

Style# 315
Hi-Collar Jacket
S - XXL

Sporty jacket with long collar that can be worn zipped up tight and rolled over or open, giving a wide collar appearance.

Black

Brilliant
Blue

Charcoal
Heather

Raspberry





Capri

Style# 393
Pant
XS - XXL

Wide band, cropped leg with a slight flare and back slits. You'll feel so youthful again. Custom cuts available in youth sizing.

Black

Brown

Charcoal
Heather

Joselyn

Style# 334
Women's Mock Neck Jacket
S-XXL

Smart and Classy jacket. Cuffs with slits the curve to the seam. Complete flatlock stitching with two way zipper. Easy piece to transition from Corporate to Class to Café. Preshrunk for hassle-free laundry.

Companions with:
Style# 306 Blayze





Evee

Style# 328
Long Pullover
S-XXL

Long, slimming, fitted,
forgiving and fabulous. Layer
over tights to be casual or
dress up and be comfortable.
Très Chic... You decide.

Black

Iris

Raspberry

Charcoal
Heather

Amelie

Style# 327
Cardigan
S - XXL

A simple V-neck cardigan that isn't super bulky, looks good on everyone. Great for work time or play time. Casual yet classic.

Companions with:
Style# 307 Christian





Christian

Style# 307
Cardigan
S - XXL

A GQ Wardrobe must have.
Streetwear HOT! Works for
everyone, whatever your style

Companions with:
Style# 327 Amelie

Black

Charcoal
Heather

Blayze

Style# 306
Jacket
S - XXL

High collar, hidden front and side zip pockets. Stylish detailed waist band. Flatlock stitch for chafe resistance. Can be custom two-toned.

Companions with:
Style# 345 Charlotte
Style# 321 Dominique
Style# 334 Joselyn

Visit our website:
brandwear.ca/custom

Black

Brilliant
Blue

Charcoal
Heather



Preston

Style# 341
Men's Full Button Zippered Jacket
S-XXL

Men's commuter jacket.
Great for being able to have two
ways to close, buttons or zipped.
Contrasting twill tape that frames
and gives structure to the front
opening. Outstanding appearance.
A Multifunctional jacket

Black

Charcoal
Heather

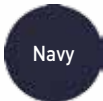


André

Style# 333
1/4 Zip CLASSIC
S - XXL

Tasteful 1/4 zip with hidden zipper
and rubber stop slider. Perfect
for most occasions.

Companions with:
Style# 377 Claire



Dillon

Style# 342
Men's Continuous Zip Hoodie
S-XXL

A pullover with Flare! We engineered this hoodie so you can control the depth of opening. With the zipper extending to the very back and contrasting inner band, it accents and frames the face. Handsome! Comfortable and a relaxed fit.





Dastan

Style# 302
Full Zip Hood
S - XXL

Straight up? Getting Comfortable never looked so good. This isn't just another "hoody" You really need to see it to appreciate all the details. V-pointed shoulder seams with sculpted hem line and fitted contour hood. Anti-lock slide zippers.

Companions with:
Style# 365 Juliette

Black

Brilliant
Blue

Charcoal
Heather



Julien

Style# 310
Short
S - XXL

Long Short with side seam pockets. Elastic waist with drawcord.

Black

Pierre

Style# 320
Pant
S - XXL

Casual walking or work out in comfort pant. Side seam pockets with no extra bulk. Elastic waist with drawcord.

Black

Charcoal
Heather



RPET Interlock

100% Recycled Polyester (RPET) Interlock Jersey

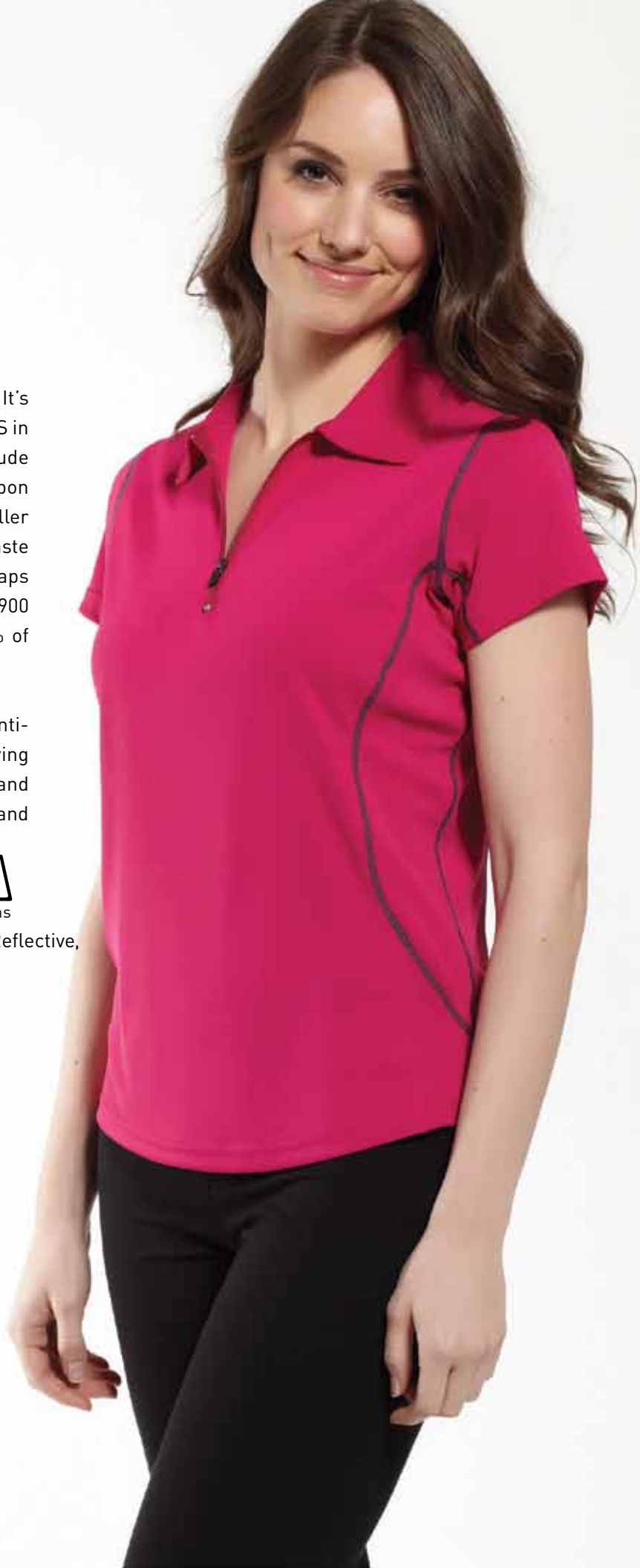
RPET is yarn that is made from RECYCLED materials. It's one of the most EARTH-FRIENDLY fabric INGREDIENTS in the world. Recycled yarn offsets the need to use new crude oil to produce virgin polyester. It has a 75% smaller carbon footprint than virgin polyester. It has a 37.5% smaller footprint than 50-50 RPET and Polyester. It diverts waste from landfill that includes soda bottles, fabric scraps and textile waste. In 2013, RPET fabric will keep over 900 million plastic bottles from landfills. In 2013 only 7% of the world's plastic bottles will be recycled.

Our 100% RPET INTERLOCK is moisture wicking, anti-bacterial which makes it odor resistant, Fast drying and breathable, interlock weave gives it a soft hand and smooth texture. The result is amazing performance and unbelievable comfort.



Logoing Techniques Recommended:

Embroidery, Silk Screening, Heat Press, **3M** Hi-Visibility Reflective, Water Based Digital Printing, Water Based Heat Press.

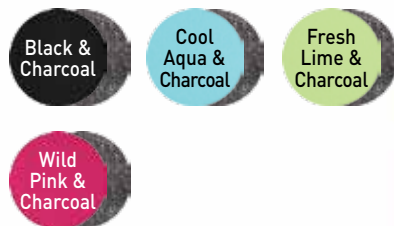


Rebecca

Style# 639
Women's ¼ zip
S-XXL

Contrasting flatlock seams throughout gives added comfort and style. Contoured Princess seams define shape. Multiple uses... this isn't just "a golf shirt".

Companions with:
Style# 647 Bubba
Style# 648 Matteo



Bubba

Style# 647
Raglan Sleeve Golf Shirt
S-XXL

Details in this design include cover top stitching on all the seams, narrow button placket finished with triangle placed at bottom. Great travelling piece. Perfect weight for warmer days.

Companions with:
Style# 638 Reese
Style# 620 Rachel
Style# 639 Rebecca



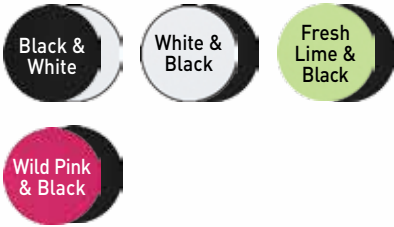
Rachel

Style# 620
Women's Cap Sleeve
V-neck Johnny Collar
S - XXL

Flattering contrast panels and piping. Long in the body. So soft and comfortable to wear. So striking on.

Companions with:
Style# 646 Rory
Style# 647 Bubba
Style# 648 Matteo

Can order custom Pantone colours with small minimums.



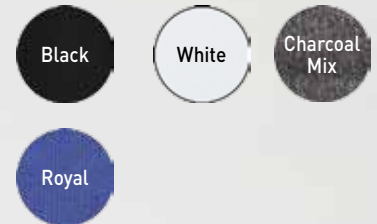
Rory

Style# 646
Solid Self Collar Golf
S - XXL

The combination of this incredible fabric with the most forgiving cut, will make this the golf shirt you'll reach for first. Side vents and drop tail.

Companions with:
Style# 638 Reese
Style# 620 Rachel
Style# 639 Rebecca

Can order custom pantone colours with small minimums





Reese

Style# 638
Solid 3 Button Placket Golf
S - XXL

A staple for every women's closet. Feel cool and confident with this classic style. Darts and side vents for more freedom of movement.

Companions with:
Style# 646 Rory
Style# 647 Bubba
Style# 648 Matteo

Can order custom pantone colours with small minimums.



Matteo

Style# 648
Men's ¼ zip
S-XXL

Popular style with drop shoulder seams and side seams that allow you to laser or imprint on panels. Quarter zip and self collar make for easy care. Low minimums available in Matteo to customize: add a pocket or colour block.

Companions with:
Style# 638 Reese
Style# 620 Rachel
Style# 639 Rebecca

Black

Charcoal
Mix

Royal

Cool
Aqua

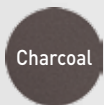
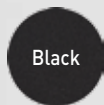
Fresh
Lime

Tri-Lite

Tri-Lite is a uniquely new hi-performance 100% Polyester Interlock 3-Layer. Bonded with a technical membrane between the layers to give you the lightest weather resistant jacket yet. With a 2-way stretch that really feels like a 4-way stretch, it is ideal for any activity as it keeps you warm and dry. Supple to the touch, super soft, super comfy, super quiet. An absolute break through. The answer to the storm that threatens your vacation. So soft, light and packable. Any wrinkles fall right out when unpacked. These are the only jackets you need in your golf bag.

Logoing Techniques Recommended:

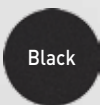
Embroidery, **3M** Hi-Visibility Reflective & Lasering



Bella

Style# 908
Long Hooded Trench Coat
S - XXL

Your trench coat alternative. It's not just for weekends or walking the dog. Designed for evening or the workplace. With a 2-way covered zipper, flatlock stitching, contour hood and longer back, it's a multi-season keeper.



Spencer

Style #904
Men's Jacket
S - XXL

Detailed Seams With Tasteful
Cover Top Chain Stitch To
Accentuate. Darts At Elbows.
Deep Zippered Side Pockets. Auto
Lock Zippers And Chin Guard. Very
Current Style. A Perfect Travelling
Companion. Light And Packable.

Companions with:
Style# 907 Bryce

Black

Silver

Bryce

Style# 907
Jacket
S - XXL

Flat lock seams to make you look stunning. Reverse-coil zippers. The perfect travelling jacket. So soft you can roll it into a ball. So versatile you can wear it golfing or to dinner.

Companions with:
Style# 904 Spencer



Felix

Style# 909
Vest
S - XXL

A Travelling Essential. When you need to block the wind or rain from your torso... or need just that one extra layer... let this be your pick. Flatlock stitching, amazing stretch along with the quietness of this fabric allows for freedom of movement. Cell phone, Tee, I-Pod chest pocket.

Black

Charcoal
& Silver

Dawn

Style# 901
Contrast Hoodie
S - XXL

Dawn hoodie delivers everything you could possibly imagine for an all around, everyday, every sport, every event jacket. Stowable, packable for "just in case" weather, she comes fully prepared for almost any mid-season condition. Left chest pocket, Girls.. for your I-Pod, I-Phone or whatever your most prized essential is. Great style and detail along with Flat lock seams, contour "hugging" hood. Longer back.

Companions with:
Style# 905 Eclipse



Eclipse

Style# 905

Hood

S - XXL

Voted best, lightest 3-layer hoodie... hands down. So soft and lightweight, you can roll it into a small ball. Be cool and confident with one of the hottest looks. Flatlock stitching, contour hood, covered zips, longer tail, velcro® closure-cinch cuffs.

Companions with:
Style# 901 Dawn

Black

Silver

Silver &
Charcoal



Vector X3

Vector X3 is the newest addition to our remarkable soft shell program. Vector X3 offers the same great functions and features as our Tri-Lite and X-Tweed. Three layers with two way stretch weave, breathability with wind and water resistance.

Vector X3 named for its linear embossed print gives you one more striking alternative. Vector X3 is here to energize your style.

**All Over Custom Embossed Prints
Available With Low Minimums.
Pantone Matching Also Available.**

Logoing Techniques Recommended:
Embroidery, **3M** Hi-Visibility Reflective



Black



Mocha



320
Grams





Aries

Style# 508
Anorak Jacket
S - XXL

Practical?, ..sure.
Functional?, ..of course.
Fun?, ..no doubt.
Groovy?, ..not sure yet.
Stylish, smart, sharp and
sensational?, ..absolutely!

Companions With:
Style# 518 Titus
Style# 517 Eos



Black

Titus

Style# 518
Jacket
S - XXL

Simple yet dynamic. Standard with a touch of electric. Electric with a touch of class. So many looks with just one jacket.

Companions With:
Style# 508 Aries



Black



Mocha

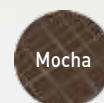
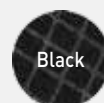


Eos

Style# 517
Hood
S - XXL

Is it a need or is it a want. Need the hood, want the style. Need the style, nice to have with a hood. Either way you're covered.

Companions With:
Style# 508 Aries



X-Tweed

Woolen Tweeds were originally desirable for outerwear being moisture resistant and durable. Our new X-Tweed takes it to a whole new level. X-Tweed is a wool blend bonded three-layer soft shell. It has the soft, open and flexible feel of a sweater. Two-way stretch makes it comfy. Three-layer bonding to microfleece makes it cozy. Wind and Water Resistant and Breathable. Tired of that same old black soft shell jacket? Step up to X-Tweed for a transformation that will amplify your style with already great function.

Face: 20% Wool, 30% Acrylic, 50% Polyester. Backing: 100% Polyester

Logoing Techniques Recommended:

Embroidery, Heat Press







Rogue

Style# 817

Hood

S - XXL

Contrasting flatlock stitch to define the amazing structure and details in this hoodie. Contour hood, discrete thumb holes in cuffs and disguised inner pockets are a couple of hidden jewels. Make a strong statement.

Companions With:

Style# 818 Storm



Storm

Style# 818
Hood
S - XXL

Get carried away. It's all about you in this stunning contour hoodie. Contrast flat lock stitch, zippered pockets, longer back all add up to simply perfect. "Picture This" your own pantone threads as contrast. Minimum 72 units.

Companions With:
Style# 817 Rogue

Grey
Mix

Charcoal
Mix





Troy

Style# 832
Top Coat
S - XXL

We took a tried and true classic and updated it with a cell phone pocket, 2-way rubber stopper zipper and storm flap. Warm and Handsome without the bulk. This coat really shines through.

Companions With:
Style# 807 Tempest

Charcoal
Mix



Tempest

Style# 807
Classic Long Coat
S - XXL

Our longest coat ever, sheds rain and snow on your daily commute. Slimming Princess seams with curved on seam pockets making for a feminine, silhouette. Distinctly “flattering-on everyone” cut. Back vent allows for moving room. This investment will keep you looking your best for many winters to come.

Companions With:
Style# 832 Troy

Charcoal
Mix

X-Tweed

Polaris

Style# 819

Jacket

S - XXL

Check it out. The brightest 3-layer soft shell jacket yet. Fusion soft shell shoulders to bead the rain. X-Tweed body to get noticed. Any outdoor activity? Absolutely! Dress it up for Dinner? You bet!



Toque

Style# 890
Toque
S/M - L/XL

A protected warm head means more fun. Wool exterior & soft fleece lining to hold in the warmth while feeling soft next to your skin. Flatlock stitching eliminates abrasion for more comfort.

Grey
Mix

Charcoal
Mix

Mittens

Style# 892
Mitten
S/M - L/XL

The ultimate keep your hands warm and insulated all day.

Grey
Mix

Charcoal
Mix

Gloves

Style# 891
Glove
S/M - L/XL

Make it all about comfort
without sacrificing your look.
Warm and cozy.



Transformer

Style# 893
Convertible Mitten
One Size

Give cold "the fingers". When you
need the use of your hands, just
flip back the cover top mitten and
hook onto the Velcro to expose
your fingers. Warm or cold... Get
the job done then cover up again.





Arctic Twist

Named Arctic Twist because it has the same distinctive look as Icelandic Wool, which has long been known for its high resistance to cold and water. A three-layer bonded wool blend makes these toques and mittens highly insulated.

Face:

3% Wool, 50% Acrylic,
11% Polyester, 12% Nylon,
21% Cotton, 3% Mohair

Backing:

100% Polyester

*Logoing Techniques
Recommended:*

Embroidery, Heat Press



Grams

Toque & Mittens

Style# 790

Toque

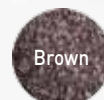
S/M - L/XL

Style# 792

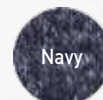
Mitten

S/M - L/XL

Wool exterior & soft fleece lining to hold in the warmth while feeling soft next to your skin. Flatlock stitching eliminates abrasion for more comfort.



Brown



Navy



Stadium Cover

Style# 8030
Stadium Cover
One Size

100% Polysuede & Sherpa Fleece: 40%
Recycled Polyester, 60% Polyester

Faux lamb's wool blanket carrier with adjustable nylon strap. Perfect way to carry your Lodge Blanket to games, picnics or any event. Fabulous to sit on. Great presentation Fits 50" x 60" Style# 8000 Lodge blanket.

Logoing Techniques Recommended:
Laser, Embroidery



Lodge Blanket

Style# 8000
Faux Lambs Wool Lodge Blanket
One Size - 50" x 60"

Resort Blanket

Style# 8001
Faux Lambs Wool Blanket
One Size - 60" x 70"

100% Polysuede &
Sherpa Fleece:
40% Recycled Polyester
60% Polyester

Unique sueded finish that gives the appearance of rich shearling like no other. Bonded to 100% polyester Sherpa fleece, it is amazingly warm and cozy. Easy to care for. Washer, dryer friendly! Put your name or logo on this heirloom piece. Lasering this fabric will give a "3D" with outstanding detail.

Logoing Techniques Recommended:

Laser, Embroidery



Want More?

“WOW” Your Customers!

... or just can't find it? We can help.

Custom Is Our Specialty!

Our Custom Program allows you to stand apart from the competition and satisfy your customer's individual needs. Customize your own program and keep them coming back for more.

We are 100% Made in Canada.

With access to an abundance of different fabrics and styles from all around the world, The possibilities are endless!

Full Turnkey Decoration:

Laser etching, 3D laser, embroidery, water based digital printing, silkscreening, heat press, applique, including 3M, dazzles, sparkles, luster's, glitters, shimmers & metallics (to name a few).

What Does This Mean For You?

Your Styles, Your Fit, Your Colours. Quick turnaround times. As little as 3 weeks from sign off. Low minimums. Some as little as 24 units. Run your own program for as long as you want... you decide. Private label available.

We will work with you from design, fabric selection and decoration, right through to price point and Pantone colours. Give us your wish list and we'll make it happen.

Are you looking for something out of the ordinary or can't find what you need in other programs? We can help!

If you can imagine it... We can make it happen. Let us make you look brilliant!

For a more information & a detailed description of how Our Custom Program can work for you.

Please Visit: www.brandwear.ca/custom



Easy Ways To Customize!

- ① Colour up the buttons
- ② Your logo here
- ③ **PANTONE®**
Match body to your colour
- ④ Simply change the thread colour to match your logo
- ⑤ Keep the style, change the fabric
- ⑥ Private label here

Or Go Entirely Off The Grid!



#20081202



#41545



US #60927



#470435

